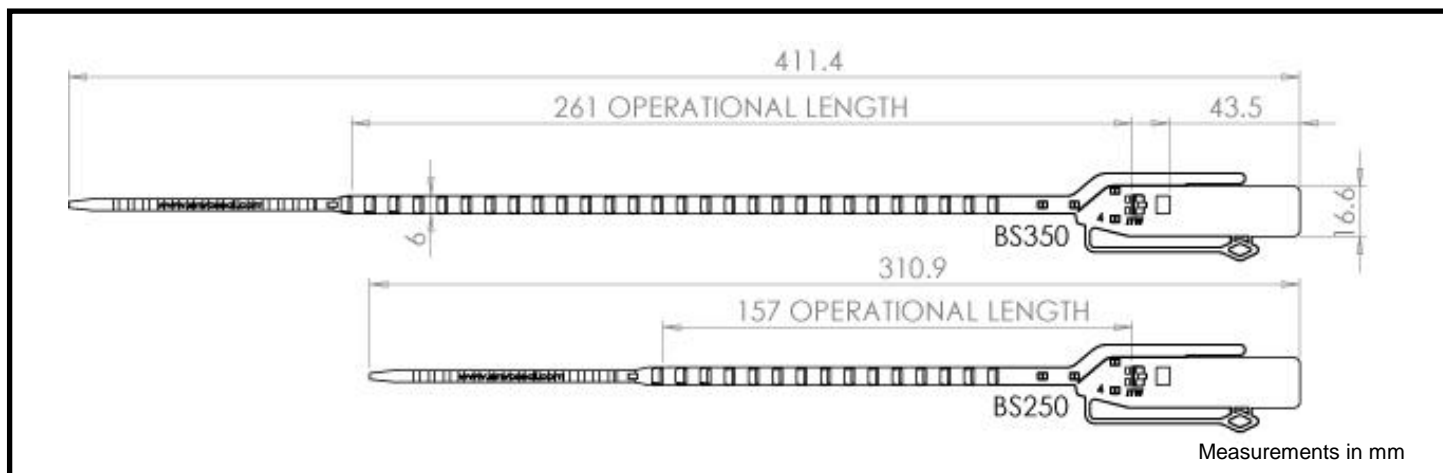


BAG SEAL™

MULTI-PURPOSE PLASTIC PULL UP SEAL



Measurements in mm

FEATURES

- Improved grip provided by reversed teeth on tail
- One-piece construction is strong and value for money
- Available with tear line for easy removal by hand
- Contains no metal parts – is recyclable

SPECIFICATION

Materials:

Polypropylene

Pull Strength (average):

Tensile strength: approx. 200N (equivalent to ~20kg)

Recommended Operational Temperature Range*:

All versions: 0°C to +50°C

(NB: all material is increasingly brittle with decreasing temp.)

Customs classification:

ISO/PAS 17712 Equivalent: Indicative seal

UK Customs: Group 3

Minimum hole size for tail to pass through:

6.5mm diameter hole or 6.5mm x 4mm slot

Stock Versions:

BS350 WTL: With tear line, 261mm operational length

Stock Colours:

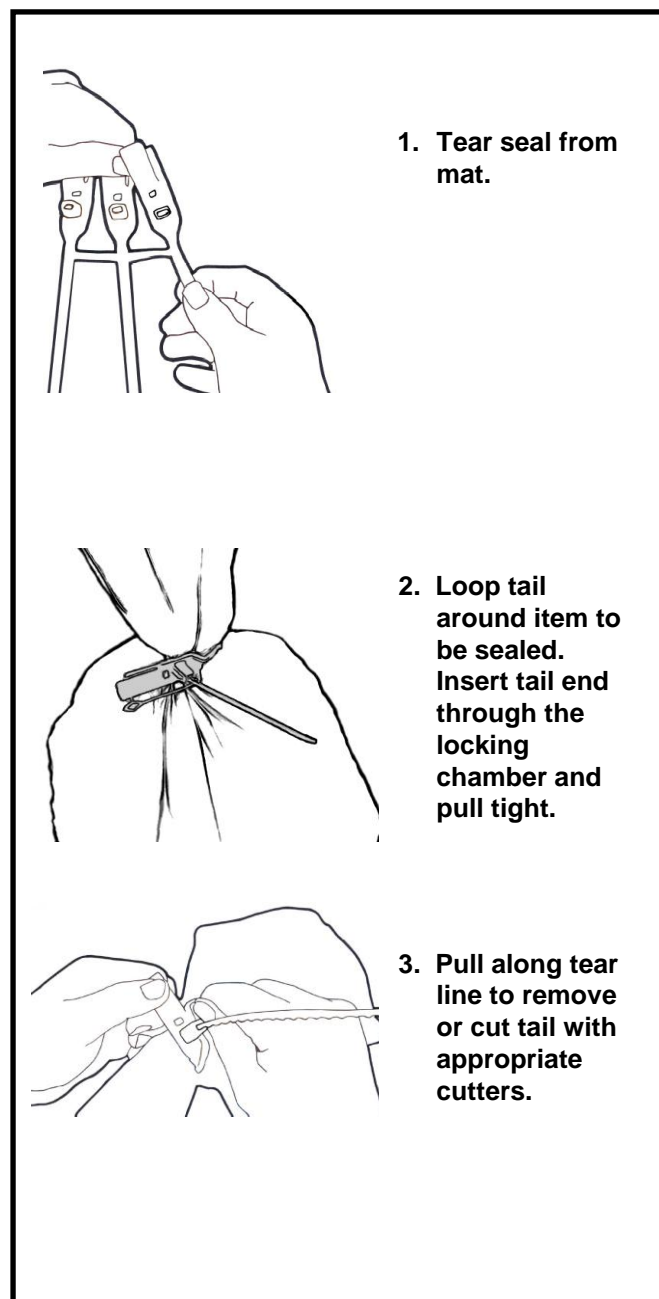
All stock versions: Blue, Green

Stock Markings:

All stock versions: Hot foil stamped (black) “Envoseal” and 7 digit numbering

Packaging:

BS350 WTL 1000 per box in mats of 5, 500mm x 205mm x 460mm, GW. 4.2kg





CUSTOMISATION

All customisation available upon request only for orders above:

All custom versions: 25,000

Custom Marking:

All custom versions: Hot foil stamped (black or white) with custom logo (max. 24mm x 7mm) and 7 digit numbering

Custom Colours:

All custom versions: choice of colours

APPLICATIONS

- Cash bags
- Property bags
- Roll cages
- Distribution/Tote boxes

TYPICAL RAW MATERIAL SAFETY AND PROPERTIES

	Polypropylene
Health & Safety	The material is not hazardous. However, care should be taken when applying and removing a seal.
Storage & handling	Keep in secure, dry & well ventilated place at room temperature and protect from contamination.
Disposal of used seals	This product is not bio-degradable. It should be recycled or otherwise disposed of in compliance with local authority regulations.
Flammability	UL 94: HB
In case of fire	Fires can be extinguished by conventional means with water spray preferred.
Melting point	Polypropylene will melt at approx. 150 degrees centigrade.

All values are typical values as published and are for guidance only. ITW Envopak reserves the right to alter these specifications without notice. The above safety information has been extracted from material safety data sheets supplied by our raw material suppliers. No liability is taken by ITW Envopak for the accuracy of this information.

*Recommended operational temperature range is a guide only. The seal can withstand more extreme temperatures depending on conditions. For temperatures outside the recommended range seals should first be tested in the specific application by the customer.