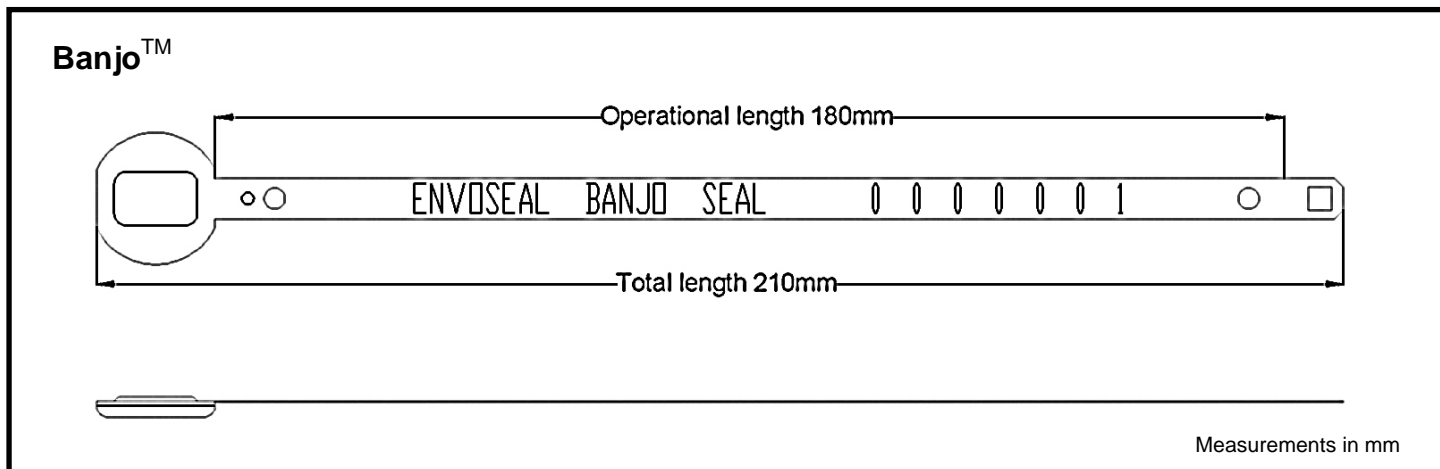


# BANJO™

## A COST EFFECTIVE METAL STRIP SEAL



### FEATURES

- Alignment holes aid and check the sealing process
- Cutting across holes facilitates removal
- Markings permanently embossed for clear identification
- Cost effective one-piece metal construction
- 7mm wide strap fits most applicable apertures

### SPECIFICATION

#### Materials:

*Banjo™*: Tin plated (electrolytic) mild steel

#### Pull Strength (average):

*Banjo™*: approx. 540N (equivalent to ~55kg)

#### Recommended Operational Temperature Range\*:

*Banjo™*: -15°C to +50°C

(NB: all material is increasingly brittle with decreasing temp.)

#### Customs classification:

ISO/PAS 17712: Indicative Seal

UK Customs: Group 3 equivalent

#### Minimum hole size for strap to pass through:

*Banjo™*: 7.2 mm hole diameter or slot width

#### Stock Versions:

*Not Held in Stock*

#### Stock Colours:

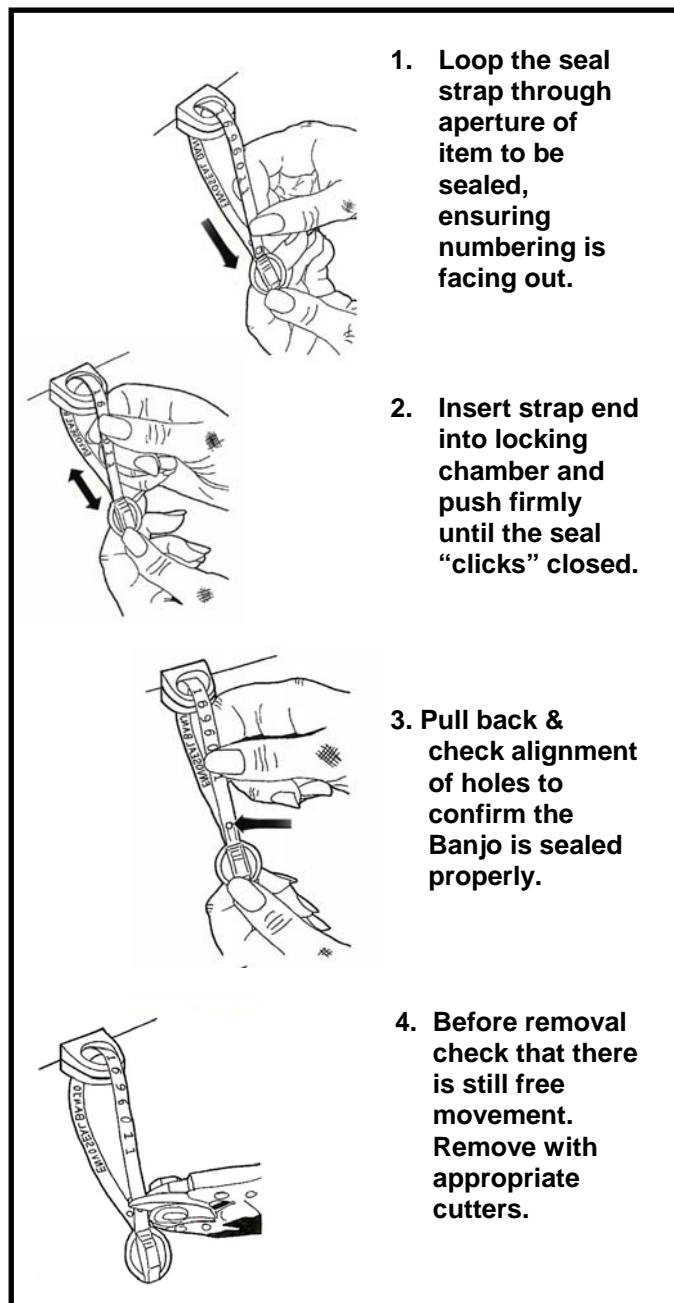
*Not Held in Stock*

#### Stock Markings:

*Not Held in Stock*

#### Packaging:

All versions: 1000/box, bundles of 50, 260x260x120mm, 6.0kg



## Technical Information Sheet

06/04/06

### CUSTOMISATION

All customisation available upon request only for orders above:

*All custom versions: 10,000 parts*

#### Custom Versions:

*BJTP: 180mm operational length*

#### Custom Marking:

*Banjo 180mm:* - Embossed with up to 19 digit custom lettering OR custom logo (max. 5x35mm)  
And embossed with 7 digit numbering

#### Custom Colours:

*All versions: Matt metallic/silver only*

### APPLICATIONS

- Vehicle doors
- Containers
- Roll cages
- TIR cables

### TYPICAL RAW MATERIAL SAFETY AND PROPERTIES

	Steel
<b>Health &amp; Safety</b>	The material is not hazardous. However, care should be taken when applying and removing a seal.
<b>Storage &amp; handling</b>	Keep in secure, dry & well ventilated place at room temperature and protect from contamination.
<b>Disposal of used seals</b>	Material should be recycled or otherwise disposed of in compliance with local authority regulations.
<b>Flammability</b>	N/A
<b>In case of fire</b>	Dry powder or sand should be used.
<b>Melting point</b>	Steel will melt at approx. 1500 degrees Celsius.

**Note: Boxes should not be stacked more than 5 boxes high to avoid crushing. Care should be taken when applying and removing a seal, being especially cautious of sharp edges.**

All values are typical values as published and are for guidance only. ITW Envopak reserves the right to alter these specifications without notice. The above safety information has been extracted from material safety data sheets supplied by our raw material suppliers. No liability is taken by ITW Envopak for the accuracy of this information.

\*Recommended operational temperature range is a guide only. The seal can withstand more extreme temperatures depending on conditions. For temperatures outside the recommended range seals should first be tested in the specific application by the customer.

