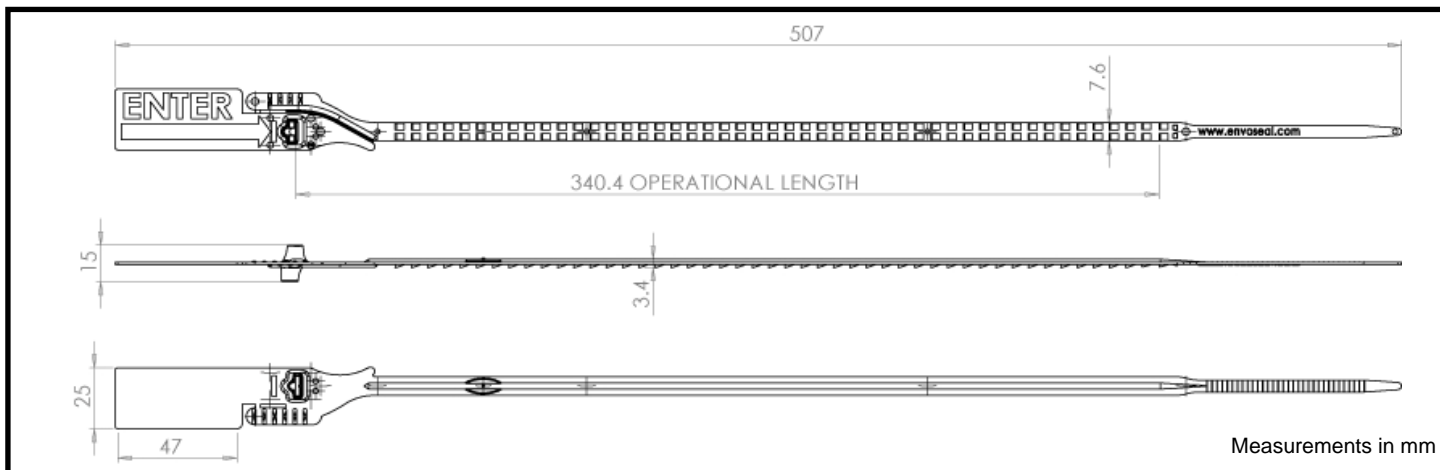


BANK GRIP XL



FEATURES

- Simple pull up design allows for speedy application
- Available with tear line for easy removal by hand
- Available with or without tearline
- Contains no metal parts – is recyclable

SPECIFICATION

Materials:

Bank Grip XL: Polypropylene

Pull Strength (average):

Tensile strength: approx. 250N (equivalent to ~25kg)

Recommended Operational Temperature Range*:

Bank Grip XL: 0°C to +50°C

(NB: all material is increasingly brittle with decreasing temp.)

Minimum hole size for tail to pass through:

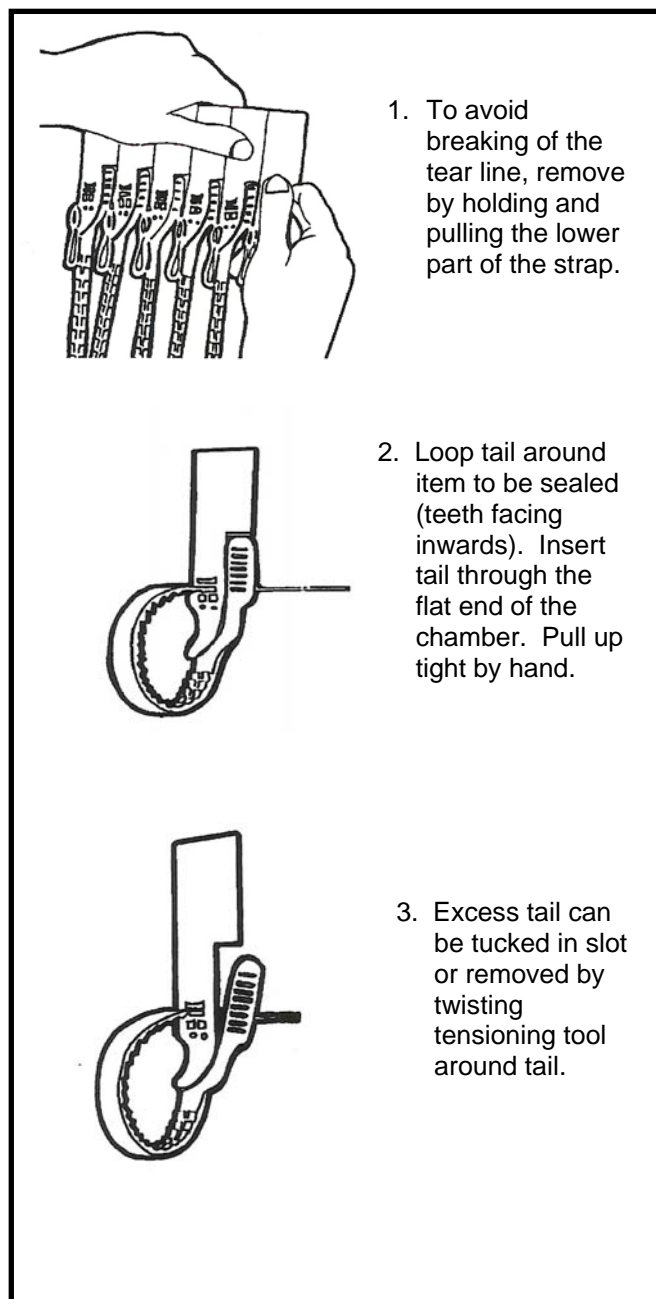
8mm diameter hole or 8mm x 3.5mm slot

Stock Versions:

None

Packaging:

500 per box, mats of 10, 312x600x260mm, 4.0kg
(Approx - based on estimates)





CUSTOMISATION

All customisation available upon request only for orders above:

All custom versions: 25,000

Custom Versions:

With Tear Line

No Tear Line

Custom Marking:

All custom versions: Laser marked logo and number
Bar-coding possible (thermal print)

Custom Colours:

All custom versions: choice of colours

APPLICATIONS

- Mail sacks
- Property bags
- Roll cages
- Boxes

TYPICAL RAW MATERIAL SAFETY AND PROPERTIES

	Polypropylene
Health & Safety	The material is not hazardous. However, care should be taken when applying and removing a seal.
Storage & handling	Keep in secure, dry & well ventilated place at room temperature and protect from contamination.
Disposal of used seals	This product is not bio-degradable. It should be recycled or otherwise disposed of in compliance with local authority regulations.
Flammability	UL 94: HB
In case of fire	Fires can be extinguished by conventional means with water spray preferred.
Melting point	Polypropylene will melt at approx. 150 degrees centigrade.

All values are typical values as published and are for guidance only. ITW Envopak reserves the right to alter these specifications without notice. The above safety information has been extracted from material safety data sheets supplied by our raw material suppliers. No liability is taken by ITW Envopak for the accuracy of this information.

*Recommended operational temperature range is a guide only. The seal can withstand more extreme temperatures depending on conditions. For temperatures outside the recommended range seals should first be tested in the specific application by the customer.