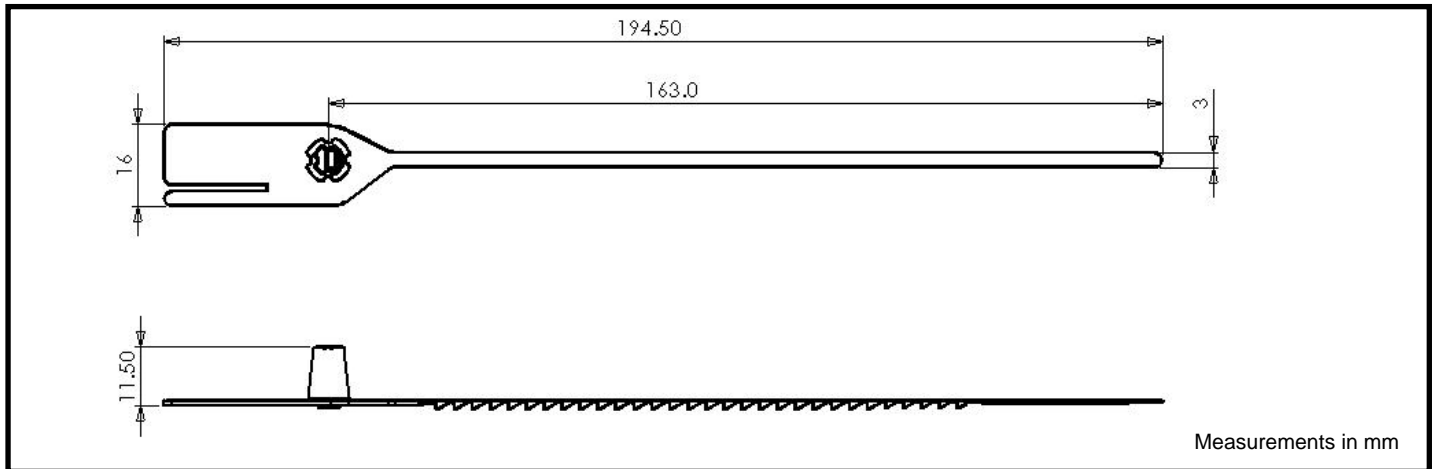


FLEXISEAL

MULTI-PURPOSE NARROW STRAP NYLON SEAL



FEATURES

- Strong thin strap ideal for small apertures/eyelets
- Supplied in strips of 10 for easy handling
- Contains no metal parts – is recyclable

SPECIFICATION

Materials:

Flexiseal: Nylon

Pull Strength (average):

120N (equivalent to ~12kg)

Recommended Operational Temperature Range*:

All versions: -5°C to +50°C

(NB: all material is increasingly brittle with decreasing temp.)

Customs classification:

C-TPAT / ISO/PAS 17712: Indicative Seal

UK Customs: Group 3 (indicative seals)

Minimum hole size for tail to pass through:

All versions: 3mm diameter

Stock Versions:

Nylon WTL (With Tear Line)

- NTL (No Tear Line) available on request

Stock Colours:

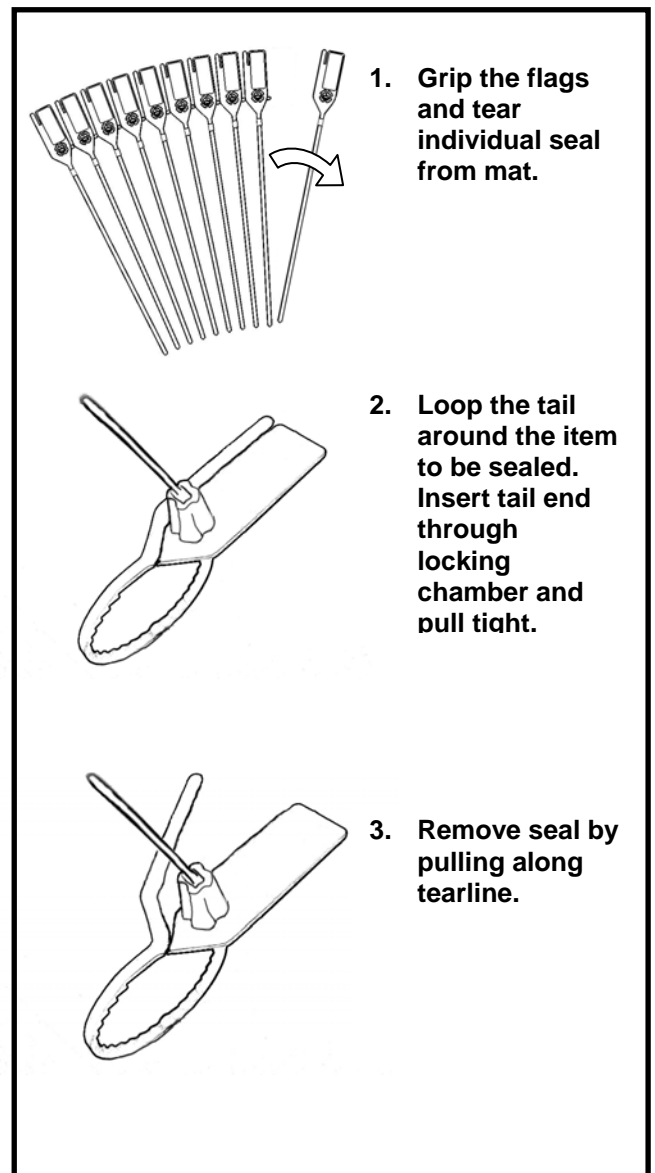
WTL - Blue, Green

Stock Markings:

All stock versions: Hot foil stamped (black or white)
"Envoseal" and 7 digit numbering

Packaging:

Mats of 10, 1000 per box, 230x220x240mm, 1.8kg





CUSTOMISATION

All customisation available upon request only for orders above:

All versions: 25,000 parts

Custom Versions:

Same as stock versions:

Custom Marking:

All versions: - Hot foil stamped (black or white) with custom logo and serial numbering

Custom Colours:

All versions: choice of colours

APPLICATIONS

- Catering/Airline trolleys
- ATM cassettes
- Distribution/Tote boxes
- Polythene bags

TYPICAL RAW MATERIAL SAFETY AND PROPERTIES

	Nylon
Health & Safety	The material is not hazardous. However, care should be taken when applying and removing a seal.
Storage & handling	Keep in secure, dry & well ventilated place at room temperature and protect from contamination.
Disposal of used seals	This product is not bio-degradable. It should be recycled or otherwise disposed of in compliance with local authority regulations.
Flammability	UL 94: HB
In case of fire	Water spray or foam is recommended.
Melting point	Nylon will melt at approx. 220 degrees centigrade.

All values are typical values as published and are for guidance only. ITW Envopak reserves the right to alter these specifications without notice. The above safety information has been extracted from material safety data sheets supplied by our raw material suppliers. No liability is taken by ITW Envopak for the accuracy of this information.

*Recommended operational temperature range is a guide only. The seal can withstand more extreme temperatures depending on conditions. For temperatures outside the recommended range seals should first be tested in the specific application by the customer.