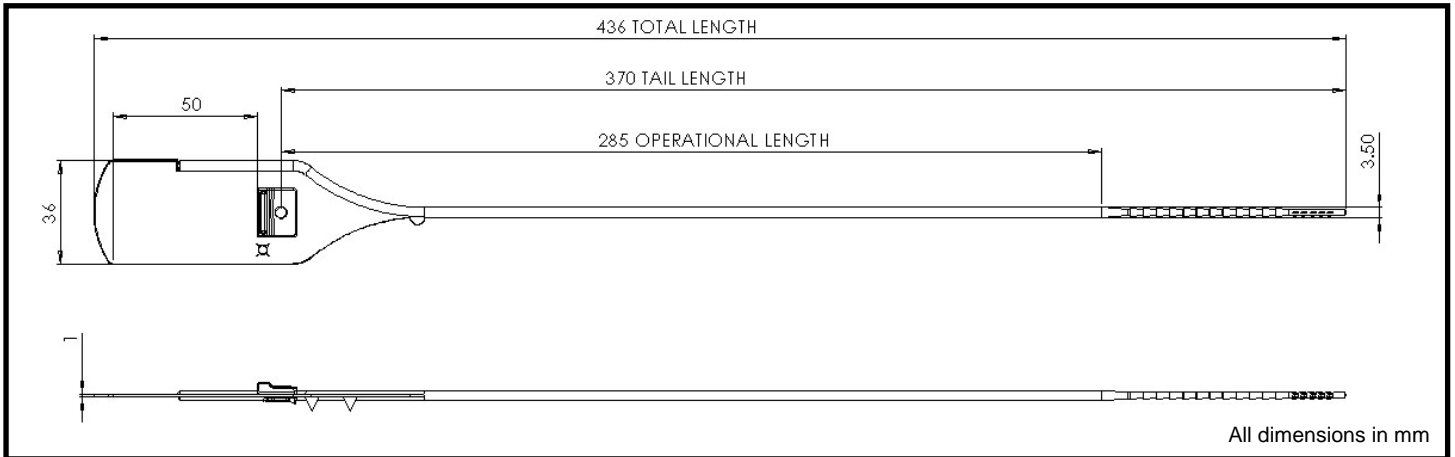


# OMEGA XL WTL SEAL™

## SMOOTH STRAP PLASTIC SEAL WITH METAL INSERT



### FEATURES

- Metal locking insert for maximum security
- Smooth tail is suitable for circular apertures
- Smooth tail gives a tight, step-less grip and avoids sore fingers
- Secure laser marking allows for barcoding
- Three teeth on reverse of flag provide secure grip around sack
- Tearline provides for easy removal by hand
- Recess hole in flag for feeding excess tail through

### SPECIFICATION

#### Materials:

*Omega XL Seal™*: Polyethylene  
*Metal insert*: Spring Steel

#### Pull Strength (average):

*Omega XL Seal™*: approx. 190N (equivalent to ~19kg)

#### Recommended Operational Temperature Range\*:

*Omega XL Seal™*: 0°C to +50°C

#### Customs classification:

*ISO/PAS 17712*: Indicative Seal  
*UK Customs*: Group 3 equivalent

#### Minimum hole size for tail to pass through:

*Omega XL Seal™*: 4mm diameter hole

#### Stock Colours:

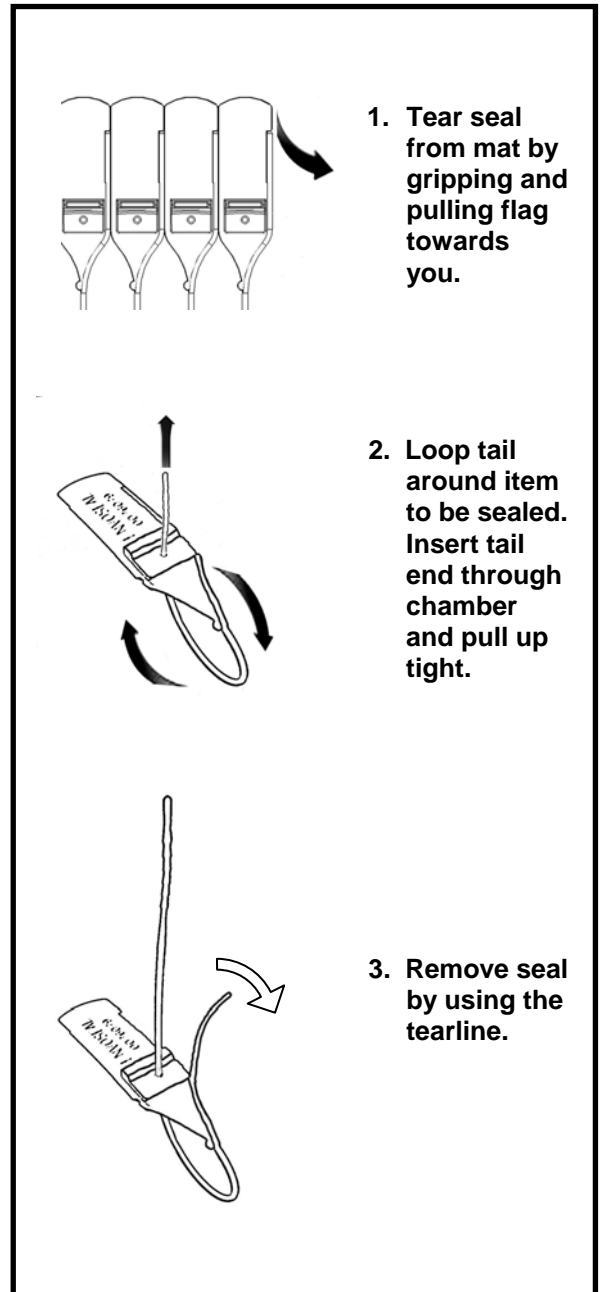
White & Blue

#### Stock Markings:

Laser marked "Envoseal" and 7 digit number

#### Packaging:

1000 per box (in mats of 5), 460 x 390 x 320 mm, 8.3kg





## CUSTOMISATION

All customisation available upon request only for orders above:

All custom versions: 25,000 parts

### Custom Marking:

All custom versions: - Laser marked number / barcode, and logo (max. print area: 15mm x 30mm)

### Custom Colours:

All custom versions: choice of pale colours (Note: pale colours give good contrast with laser marking)

## APPLICATIONS

- Roll cages
- Sacks
- Tanker Valves
- Cash bags
- Boxes

## TYPICAL RAW MATERIAL SAFETY AND PROPERTIES

	Polyethylene	Steel
<b>Health &amp; Safety</b>	The material is not hazardous. However, care should be taken when applying and removing a seal.	The material is not hazardous. However, care should be taken when applying and removing a seal.
<b>Storage &amp; handling</b>	Keep in secure, dry & well ventilated place at room temperature and protect from contamination.	Keep in secure, dry & well ventilated place at room temperature and protect from contamination.
<b>Disposal of used seals</b>	This product is not bio-degradable. It should be recycled or otherwise disposed of in compliance with local authority regulations.	Material should be recycled or otherwise disposed of in compliance with local authority regulations.
<b>Flammability</b>	UL 94: HB	N/A
<b>In case of fire</b>	Fires can be extinguished by conventional means with water spray preferred.	Dry powder or sand should be used.
<b>Melting point</b>	Polypropylene will melt at approx. 150 degrees centigrade.	Steel will melt at approx. 1500 degrees Celsius.

All values are typical values as published and are for guidance only. ITW Envopak reserves the right to alter these specifications without notice. The above safety information has been extracted from material safety data sheets supplied by our raw material suppliers. No liability is taken by ITW Envopak for the accuracy of this information.

\*Recommended operational temperature range is a guide only. The seal can withstand more extreme temperatures depending on conditions. For temperatures outside the recommended range seals should first be tested in the specific application by the customer.