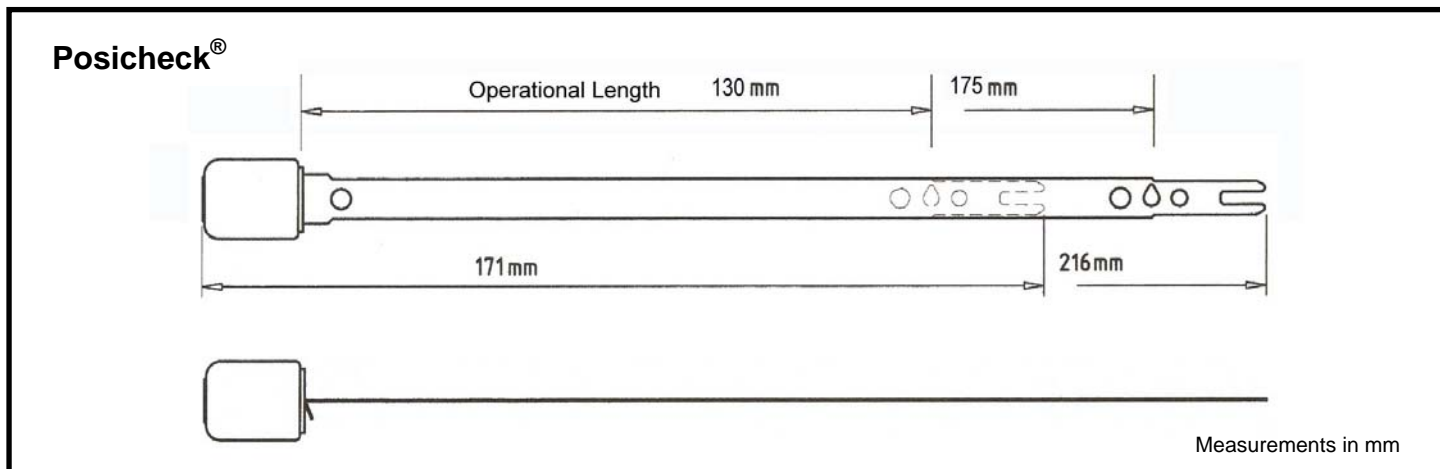


POSICHECK[®]

AN EXTREMELY SECURE METAL STRIP SEAL



FEATURES

- Double locking ring enclosed in a metal sleeved plastic shell
- Check for positive sealing visually or by touch
- Markings permanently embossed for clear identification
- Provides tamper evident closure

SPECIFICATION

Materials:

Metal strip: Tin plated (electrolytic) mild steel

Plastic shell: Styrene

Pull Strength (average):

Posicheck[®]: approx. 580N (equivalent to ~60kg)

Recommended Operational Temperature Range*:

Posicheck[®]: -15°C to +50°C

(NB: all material is increasingly brittle with decreasing temp.)

Customs classification:

ISO/PAS 17712: Indicative Seal

UK Customs: Group 3

Minimum hole size for strap to pass through:

Posicheck[®]: 8.2 mm hole diameter or 8.2 x 2mm slot

Stock Versions:

PSCK1RES: 216mm strap, with red shell

PSCK2BES: 171mm strap with blue shell

Stock Colour:

Red shell and matt metallic/silver strap

Stock Markings:

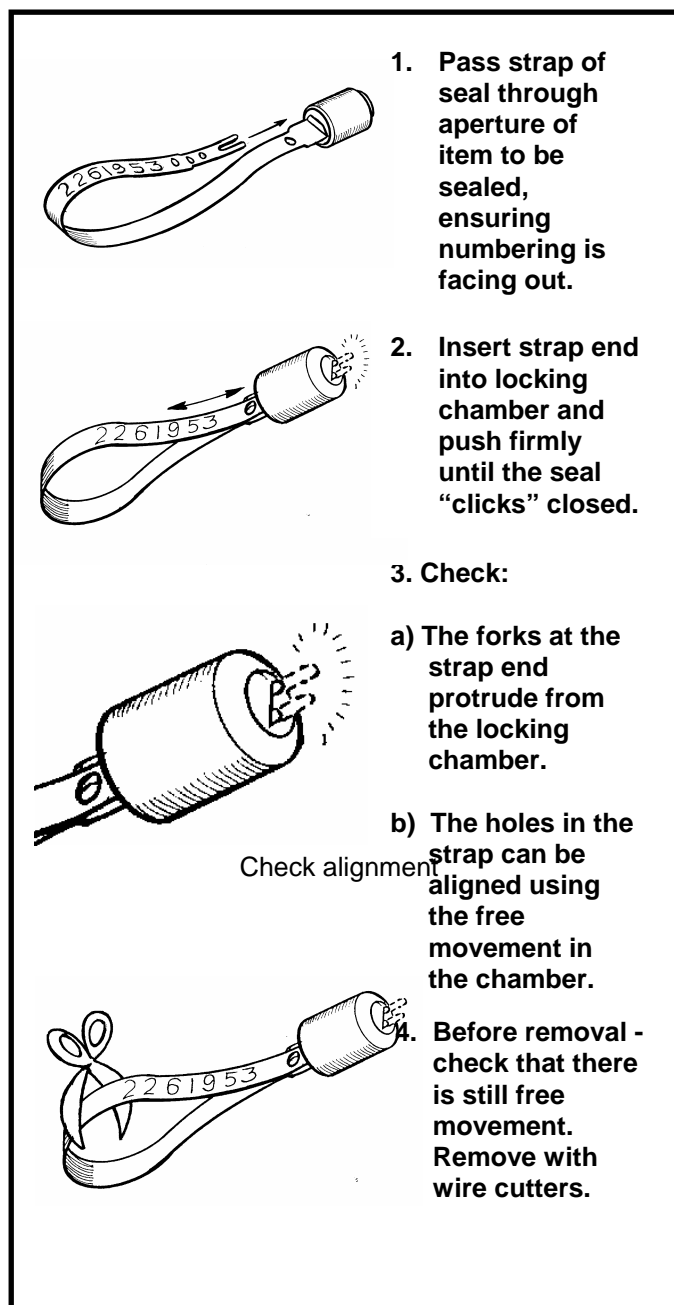
Embossed "Envoseal" and embossed 7 digit numbering

Packaging:

1000/box, bundles of 50, 270x270x320mm, 8kg

CUSTOMISATION

All customisation available upon request only for orders above:



Technical Information Sheet

06/04/06

All custom versions: 10,000 parts



Custom Versions:

- PSCK2BES: 171mm strap with blue shell, stock no.s
- PSCK2BSP: 171mm strap with blue shells, special embossing
- PSCK1RSP: 216mm strap with red shell, special embossing

Custom Marking:

- Posicheck 171mm: - Embossed with custom logo (6x40mm) or up to 11 digit custom lettering
- Posicheck 216mm: - Embossed with custom logo (6x60mm) or up to 17 digit custom lettering
- All Posicheck versions: - Embossed with 7 digit numbering

Custom Colours:

All custom versions: choice of colours for plastic shells

APPLICATIONS

- Vehicle doors
- Containers
- Roll cages
- Boxes

TYPICAL RAW MATERIAL SAFETY AND PROPERTIES

	Polystyrene	Steel
Health & Safety	The material is not hazardous. However, care should be taken when applying and removing a seal.	The material is not hazardous. However, care should be taken when applying and removing a seal.
Storage & handling	Keep in secure, dry & well ventilated place at room temperature and protect from contamination.	Keep in secure, dry & well ventilated place at room temperature and protect from contamination.
Disposal of used seals	This product is not bio-degradable. It should be recycled or otherwise disposed of in compliance with local authority regulations.	Material should be recycled or otherwise disposed of in compliance with local authority regulations.
Flammability	UL 94: HB	N/A
In case of fire	Fires can be extinguished by using chemical powder, CO2, water spray, halon or foam. Protective clothing and self-contained breathing apparatus should be used	Dry powder or sand should be used.
Melting point	Polystyrene will melt at approx. 130 degrees Celsius.	Steel will melt at approx. 1500 degrees Celsius.

Note: Boxes should not be stacked more than 5 boxes high to avoid crushing. Care should be taken when applying and removing a seal, being especially cautious of sharp edges.

All values are typical values as published and are for guidance only. ITW Envopak reserves the right to alter these specifications without notice. The above safety information has been extracted from material safety data sheets supplied by our raw material suppliers. No liability is taken by ITW Envopak for the accuracy of this information.

*Recommended operational temperature range is a guide only. The seal can withstand more extreme temperatures depending on conditions. For temperatures outside the recommended range seals should first be tested in the specific application by the customer.