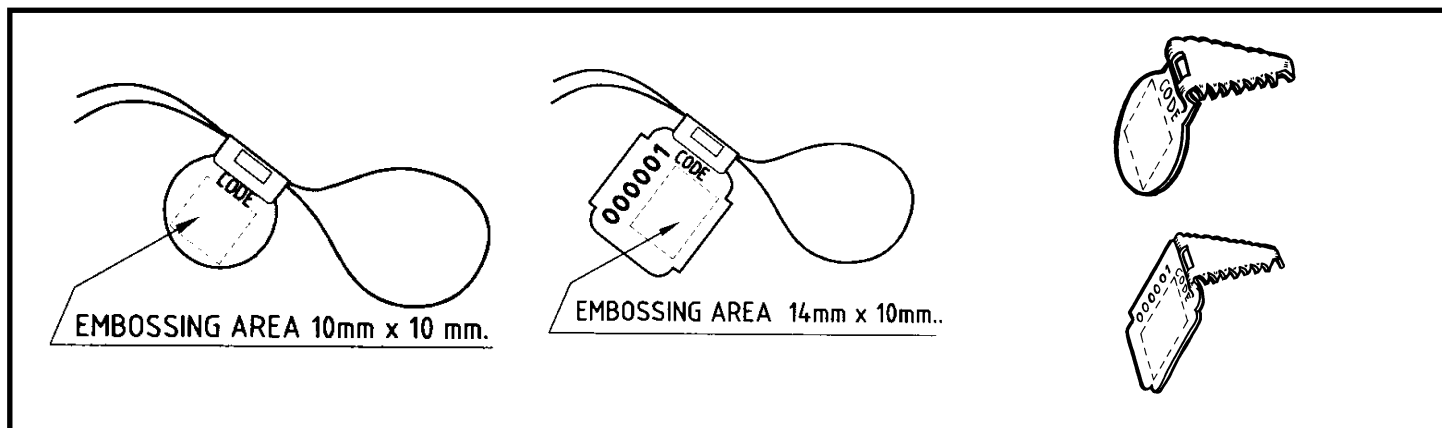


ROLL TAG

METAL SEAL FOR USE WITH WIRE



FEATURES

- Circular or rectangular versions available
- Sequential numbering and logo available
- Medium Press provides numbered coding for extra security
- Ideal for sealing items exposed to the outdoors
- All plain Roll Tags marked with X to prevent unauthorised embossing
- Simple, economical and effective

SPECIFICATIONS

Materials - Galvanised Steel, Bright Steel, Aluminium, Brass (special orders only)

Wire available in various cut lengths or in spools - GLW7 Thick Wire 1.6mm in diameter or GLW8 Thin Wire 1.1mm in diameter.

Coloured lapped sealing wire available

Minimum slot size for wire to pass through - 1.2mm

Numbering - up to 6 digits

Print area for branding: Circular 10mm x 10mm, Rectangular - 14mm x 10mm

Packaging - Numbered - 2,000 per box, plain - 5,000 per box

Box dimensions -

2,000 numbered - 30cm x 16cm x 19cm

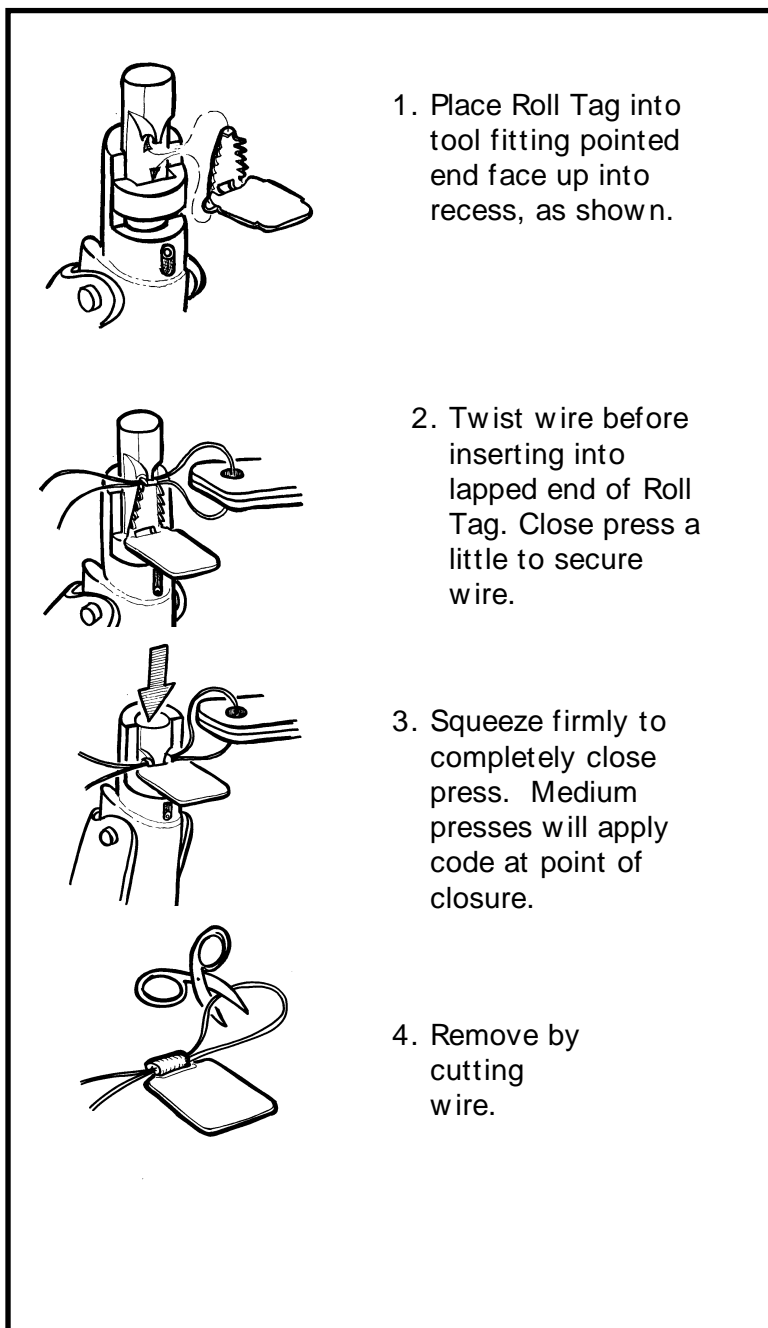
5,000 Circular plain - 30cm x 16cm x 19cm

5,000 Rectangular plain - 30cm x 20cm x 20cm

Gross weight per box: - 2,000 numbered - 3.1kg, 5,000 plain - 6.5kg

APPLICATIONS

- Ammunition boxes
- Drum closures
- Small fastenings, clocks and meters





Typical Properties for Raw Materials

	Galvanised Steel	Bright Mild Steel	Aluminium	Brass (special orders only)
Material	CS4 (BS1449)	CS3 (BS1449 Part1 1991)	Alloy 5754	CZ108 Alloy 63% Copper, 37% Zinc
Finish	VPN 145-165	Bright Finish VPN 145 - 165	Half Hard G22	Temper 3 VPN 110 - 135 Standard commercial finish.
Coating	Zinc Coated	Not coated	Not coated	Not coated

Toxicity	<ul style="list-style-type: none"> As products do not liberate dust or fumes toxicity risks by inhalation are non existent. Working with these products one does not expect a health risk.
Storage & handling	<ul style="list-style-type: none"> Seals should be stored at no more than five boxes high - to avoid crushing.
Disposal of used seals	<ul style="list-style-type: none"> Used seals may be land filled with household refuse, taking local authority regulations into consideration. Tinplate can be recycled
Health & Safety	<ul style="list-style-type: none"> Care should be taken when handling and locking seal.

The nominal values stated herein are obtained using laboratory test specimens. All values are typical values as published and are for guidance only. Envoseal reserve the right to alter these specifications without notice.

The above data has been extracted from safety data sheets supplied by our material suppliers. No liability is taken by Envoseal for the accuracy of this information.