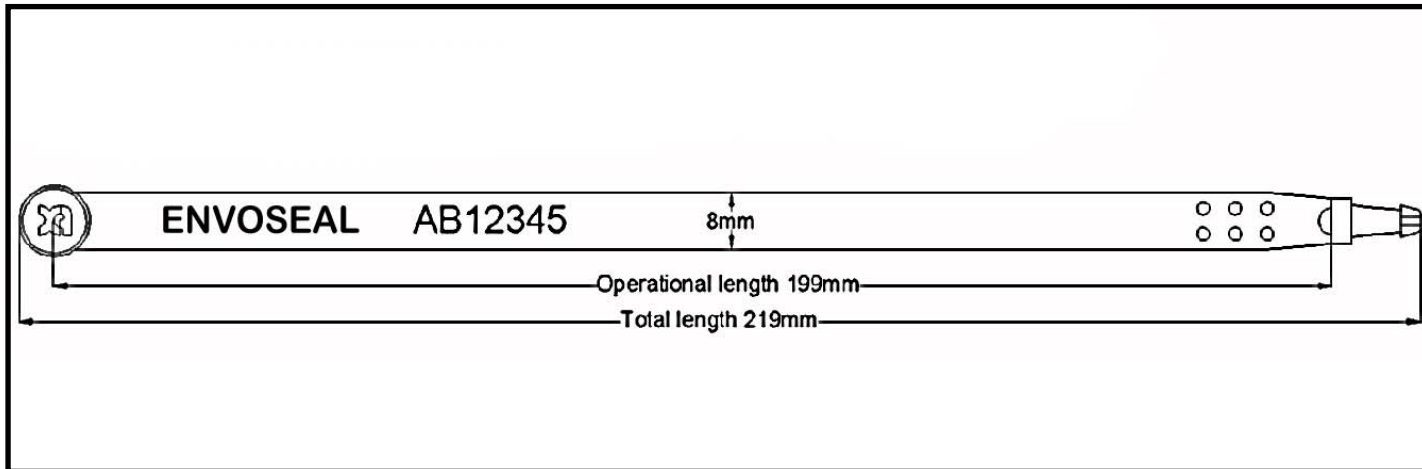


Ring Seal

FIXED LENGTH TAMPER EVIDENT PLASTIC SEAL



FEATURES

- Fixed length seal
- Closed barrel locking mechanism
- "Click" sound signifies seal has locked correctly
- Large numbers for easy identification
- Breakpoint allows for easy removal by hand

SPECIFICATION

Materials:

Polypropylene (PP)

Pull Strength (average):

Approx. 84N (equivalent to ~8kg)

Recommended Operational Temperature Range*:

0°C to +50°C

(NB: all material is increasingly brittle with decreasing temp.)

Customs Classification:

C-TPAT / ISO/PAS 17712: Indicative Seal

UK Customs: Group 3 (indicative seals)

Minimum slot size for tail to pass through:

4.5mm x 8.5mm

Stock Version:

RS207: Polypropylene, with breakpoint

Stock Colours:

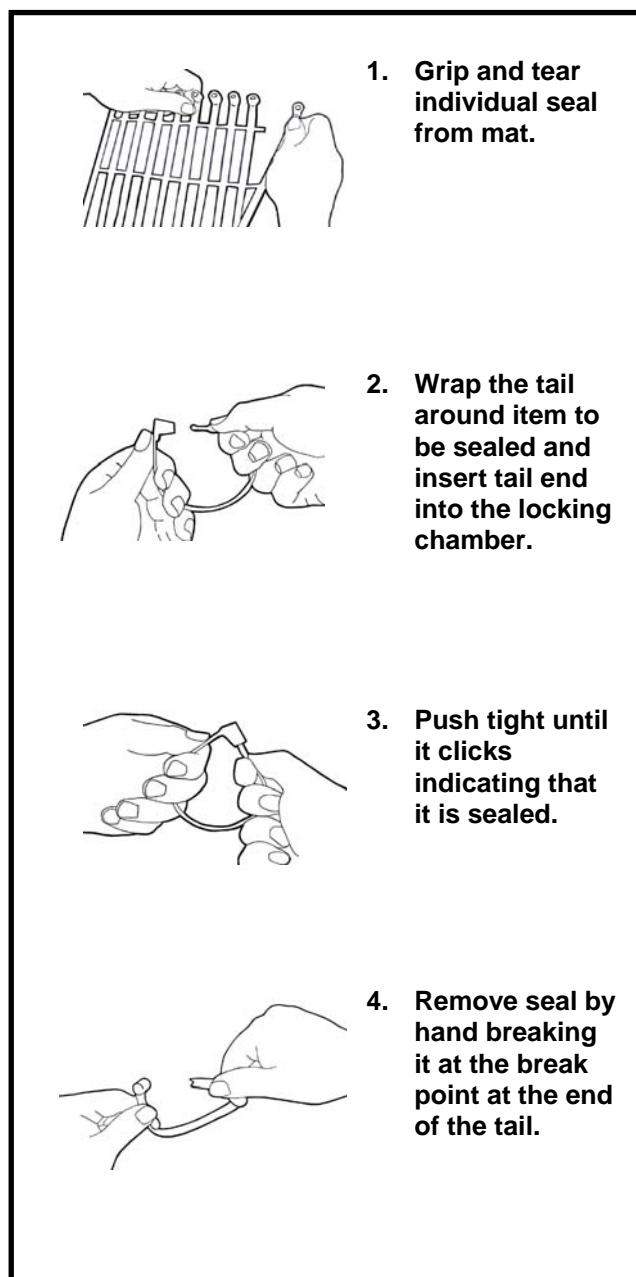
Colours: red, green

Stock Markings:

Hot foil stamped (black) "Envoseal" and 5 digit numbering with 2 digit alpha prefix

Packaging:

RS207: 1000 per box in mats of 10, 262x209x298mm, 2.8kg





CUSTOMISATION

All customisation available upon request only for orders above:
25,000 parts

Custom Marking:

All custom versions: Hot foil stamped (black or white) with custom logo (max. 45x7mm) and alpha numeric numbering

Custom Colours:

All custom versions: choice of colours

APPLICATIONS

- Vehicle doors
- Distribution boxes
- Roll cages
- Containers

TYPICAL RAW MATERIAL SAFETY AND PROPERTIES

	Polypropylene
Health & Safety	The material is not hazardous. However, care should be taken when applying and removing a seal.
Storage & handling	Keep in secure, dry & well ventilated place at room temperature and protect from contamination.
Disposal of used seals	This product is not biodegradable. It should be recycled or otherwise disposed of in compliance with local authority regulations.
Flammability	UL 94: HB
In case of fire	Fires can be extinguished by conventional means with water spray preferred.
Melting point	Polypropylene will melt at approx. 150 degrees centigrade.

All values are typical values as published and are for guidance only. ITW Envopak reserves the right to alter these specifications without notice. The above safety information has been extracted from material safety data sheets supplied by our raw material suppliers. No liability is taken by ITW Envopak for the accuracy of this information.

*Recommended operational temperature range is a guide only. The seal can withstand more extreme temperatures depending on conditions. For temperatures outside the recommended range seals should first be tested in the specific application by the customer.