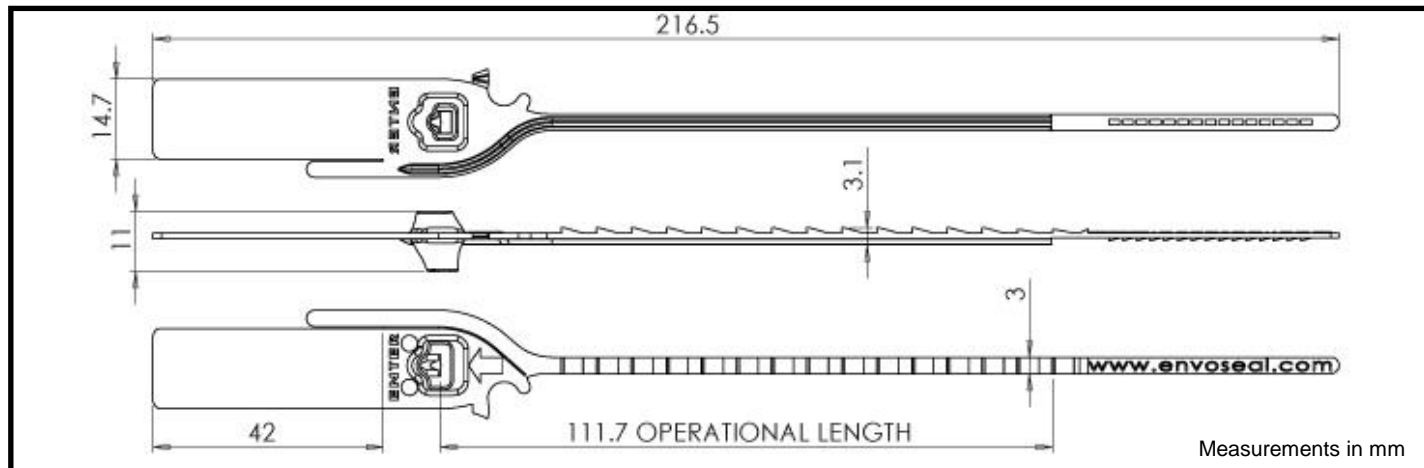


SIGMA SEAL

MULTI-PURPOSE NARROW STRAP POLYPROPYLENE SEAL



FEATURES

- Strong thin strap ideal for small apertures/eyelets
- Supplied in strips of 10 for easy handling
- Contains no metal parts – is recyclable

SPECIFICATION

Materials:

Sigma: Polypropylene

Pull Strength (average):

90N (equivalent to ~9kg)

Recommended Operational Temperature Range*:

All versions: -5°C to +50°C

(NB: all material is increasingly brittle with decreasing temp.)

Minimum hole size for tail to pass through:

All versions: 3.0 x 3.1mm or \varnothing 3.85mm

Stock Versions:

WTL (With Tear Line)

NTL (No Tear Line) – Available in January 2011

Stock Colours:

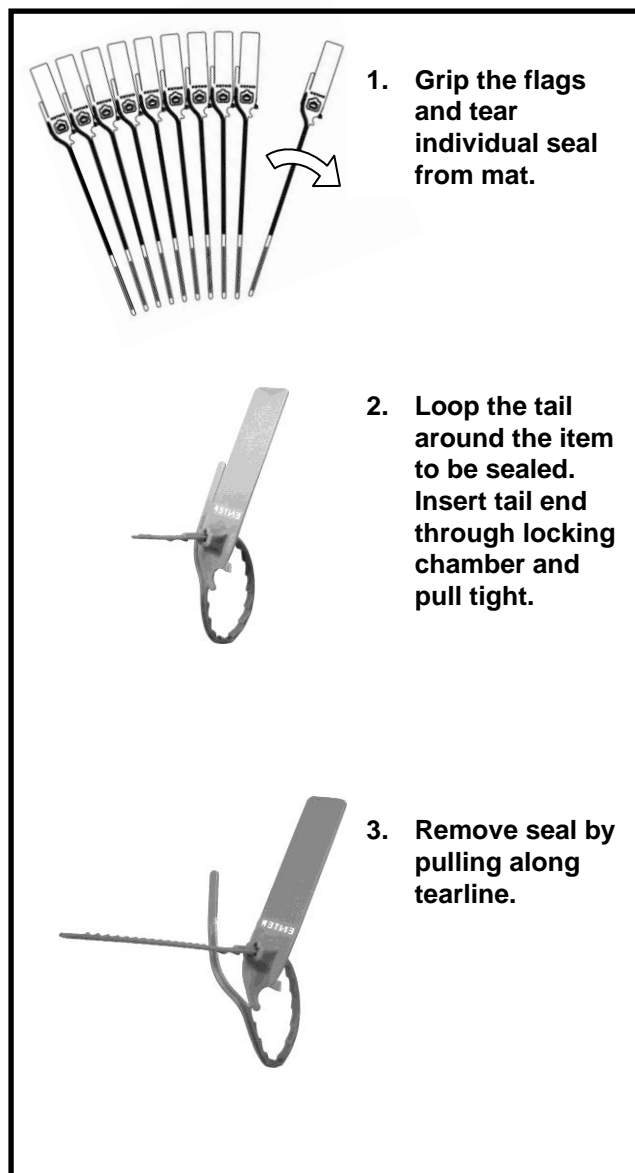
WTL/NTL - Blue, Green

Stock Markings:

All stock versions: Hot foil stamped (black or white)
“Envoseal” and 7 digit numbering

Packaging:

Mats of 10, 1000 per box, 220x260x375mm, 1.8kg





CUSTOMISATION

All customisation available upon request only for orders above:

All versions: 25,000 parts

Custom Versions:

With tear line & No tear line

Custom Marking:

- All versions:*
- Hot foil stamped (black or white) with custom logo and serial numbering
 - Bar-coding possible (thermal print)

Custom Colours:

All versions: choice of colours

APPLICATIONS

- Catering/Airline trolleys
- ATM cassettes
- Distribution/Tote boxes
- Polythene bags

TYPICAL RAW MATERIAL SAFETY AND PROPERTIES

	Polypropylene
Health & Safety	The material is not hazardous. However, care should be taken when applying and removing a seal.
Storage & handling	Keep in secure, dry & well ventilated place at room temperature and protect from contamination.
Disposal of used seals	This product is not bio-degradable. It should be recycled or otherwise disposed of in compliance with local authority regulations.
Flammability	UL 94: HB
In case of fire	Fires can be extinguished by conventional means with water spray preferred.
Melting point	Polypropylene will melt at approx. 150 degrees centigrade.

All values are typical values as published and are for guidance only. ITW Envopak reserves the right to alter these specifications without notice. The above safety information has been extracted from material safety data sheets supplied by our raw material suppliers. No liability is taken by ITW Envopak for the accuracy of this information.

*Recommended operational temperature range is a guide only. The seal can withstand more extreme temperatures depending on conditions. For temperatures outside the recommended range seals should first be tested in the specific application by the customer.