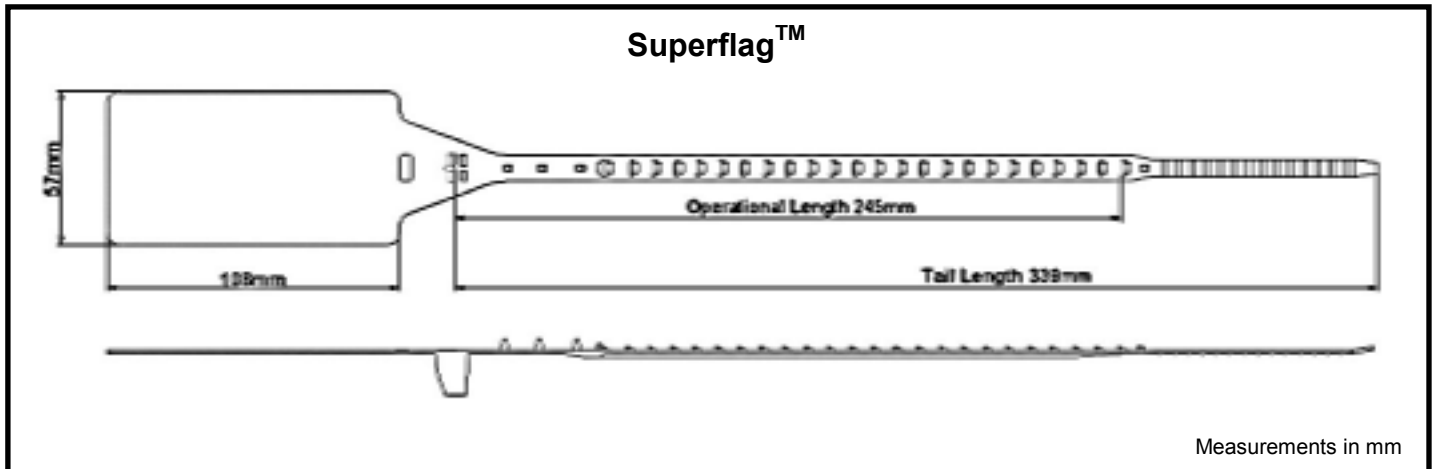


SUPERFLAG™

HEAVY DUTY PLASTIC SEAL WITH LARGE FLAG FOR LABELS



Measurements in mm

FEATURES

- Large flag for affixing self-adhesive labels
- Thick tail provides high tensile strength
- Locking teeth provide a non-slip grip
- Excess tail can be looped through the tab slot
- Contains no metal parts – is recyclable

SPECIFICATION

Materials:

Superflag™: Polypropylene

Pull Strength (average):

Superflag™: approx. 470N (equivalent to ~47kg)

Recommended Operational Temperature Range*:

All versions: 0°C to +50°C

(NB: all material is increasingly brittle with decreasing temp.)

Customs classification:

C-TPAT / ISO/PAS 17712: Indicative Seal

UK Customs: Group 3 (indicative seals)

Minimum hole size for tail to pass through:

Superflag™: 9.5mm diameter hole or 9.5mm x 4mm slot

Stock Versions:

SFLAG: Polypropylene, no tear line

Stock Colours:

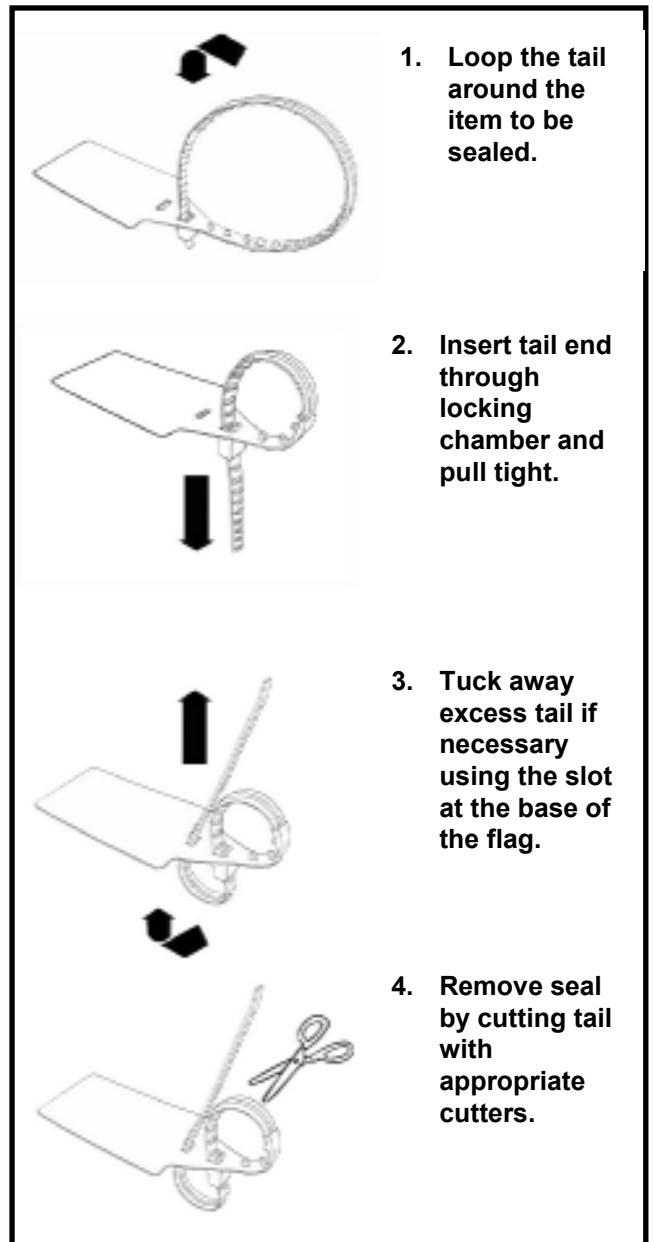
All stock versions: Clear (pale white)

Stock Markings:

All stock versions: Embossed ITW logo
No print

Packaging:

500 per Box, 541x381x302 6.1kg





CUSTOMISATION

All customisation available upon request only for orders above:

All versions: 25,000 parts

Custom Versions:

Same as stock versions:

Custom Marking:

*All versions: Custom embossed logo, max. 20mm x 5mm
No print*

Custom Colours:

All versions: choice of colours

APPLICATIONS

- Sacks
- Boxes
- Roll cages
- Vehicle doors

TYPICAL RAW MATERIAL SAFETY AND PROPERTIES

	Polypropylene
Health & Safety	The material is not hazardous. However, care should be taken when applying and removing a seal.
Storage & handling	Keep in secure, dry & well ventilated place at room temperature and protect from contamination.
Disposal of used seals	This product is not bio-degradable. It should be recycled or otherwise disposed of in compliance with local authority regulations.
Flammability	UL 94: HB
In case of fire	Fires can be extinguished by conventional means with water spray preferred.
Melting point	Polypropylene will melt at approx. 150 degrees centigrade.

All values are typical values as published and are for guidance only. ITW Envopak reserves the right to alter these specifications without notice. The above safety information has been extracted from material safety data sheets supplied by our raw material suppliers. No liability is taken by ITW Envopak for the accuracy of this information.

*Recommended operational temperature range is a guide only. The seal can withstand more extreme temperatures depending on conditions. For temperatures outside the recommended range seals should first be tested in the specific application by the customer.